

**AGENDA of the  
Portfolio Committee: Community Services  
20 October 2020  
(Also the agenda for the Mayoral Committee Meeting: 28 October 2020)**

---

**2.  
BENEFICIARIES: UPGRADING OF INFORMAL SETTLEMENTS PROGRAMME  
(UISP): 83 ERVEN: MANDELA SQUARE, ZWELIHLE**

17/5/4/1

FW Frans

Manager : Housing Administration

6 October 2020

(028) 313 8144

---

**1. Executive Summary**

This report is to inform and obtain approval from the Executive Mayor with regard to potential beneficiaries of the UISP project in Mandela Square, Zwelihle.

**2. Service Delivery and Budget Implementation Plan - IGNITE**

Directorate : Community Services  
Departement : Housing Administration

**3. Compliance with Strategic Priorities**

Provision of democratic and accountable governance  
Provision and maintenance of municipal services

**4. Delegated Authority**

Executive Mayor

**5. Legal Requirements**

Constitution of SA, 1996  
Housing Act 107 of 1997  
Local Government Systems Act, (Act 32 of 2000)  
Local Government Municipal Finance Management Act, (Act 56 of 2003).  
The National Housing Code, 2009  
Overstrand Municipality: 2015. Housing Selection Policy for Beneficiaries in  
Ownership-based Subsidy Project  
Overstrand Municipality: By-law on Municipal Land Use Planning, 2020

**6. Background/Discussion/Evaluation/Conclusion**

**Background**

**Upgrading of Informal Settlements Programme**

The key objective of the **Upgrading of Informal Settlements Programme (UISP)** is to facilitate the structured *in situ* upgrading of informal settlements as

**AGENDA of the  
Portfolio Committee: Community Services  
20 October 2020  
(Also the agenda for the Mayoral Committee Meeting: 28 October 2020)**

---

opposed to relocation to achieve the following complex and interrelated policy objectives:

- **Tenure security:** to enhance the concept of citizenship, incorporating both rights and obligations, by recognising and formalising the tenure rights of residents within informal settlements;
- **Health and Security:** to promote the development of healthy and secure living environments by facilitating the provision of affordable and sustainable basic municipal engineering infrastructure to the residents of informal settlements. This must allow for scaling up in the future; and
- **Empowerment:** to address social and economic exclusions by focusing on community empowerment and the promotion of social and economic integration, building social capital through participative processes and addressing the broader social needs of communities.

(National Housing Code. 2009. Volume 4. Part 3. P13)

**Qualifying criteria for the UISP**

The following criteria is applicable for participation in terms of the UISP, namely:

- *Households that comply with the Housing Subsidy Scheme qualification criteria*
- *Households/persons with a monthly income exceeding the maximum income limit as approved by the Minister from time to time;*
- *Households headed by minors who are not competent to contract in collaboration with the Department of Social Development;*
- *Persons who are not first time home owners;*
- *Persons who have previously received assistance and who previously owned and/or currently own a residential property. Assistance may be considered that access to the benefits of the programme will be considered on a case basis to determine the facts*
- *and the approval of access in accordance with the provisions of the implementation guidelines of the programme; and*
- *Illegal immigrants on the conditions prescribed by the Department of Home Affairs on a case basis.*

**AGENDA of the  
Portfolio Committee: Community Services  
20 October 2020  
(Also the agenda for the Mayoral Committee Meeting: 28 October 2020)**

---

- *Persons classified as aged. Aged persons who are single without financial dependants may also apply for subsidisation. Aged persons can be classified as male or female persons who have attained the minimum age set to qualify for government's old age social grant.*

(National Housing Code. 2009. Volume 4. Part 3. P16)

**The following is an extract from the agenda item, Beneficiaries: Upgrading of informal settlements programme (UISP): 141 erven, Mandela Square, Zwelihle that served before the Joint Portfolio Committee meeting on 22 September 2015:**

*The administration had to do a survey in conjunction with the implementing agent to ensure that all families residing in the informal area are recorded on the municipal waiting list. A number of 142 families residing in the informal area and the Mclintyre hostels were surveyed in Mandela Square. The last mentioned information was reported to the Executive Mayor at a meeting held on 26 August 2015.*

**The following are extracts from the agenda item, Relocation Plan for the Mandela Square, Informal Settlers on Qhayiya Secondary School to Housing Admin Site Temporary Relocation Area that served before the Joint Portfolio Committee meeting on 22 November 2016:**

*As part of the implementation of this project, the construction of a Temporary Relocation Area (TRA) is required as a result of the high densities of informal dwellers residing in the seven different informal settlements. Families will therefore have to be temporarily relocated elsewhere before construction /installation of civil services can commence on these sites (informal settlements). The Housing Admin Site was identified for this purpose and approved as the TRA by way of a departure by Council on 30 March 2016.*

*The units constructed in the TRA are partially completed houses, similar to those in the Mount Pleasant Project, with the only difference being that the final inside finishes will not be completed. A prepaid meter for electricity will be installed for every family and one wetcore (toilet structure with a washbasin and tap) will be provided per erf, to be shared by two families. An Occupancy Agreement will have to be signed by each family prior to occupation of a unit.*

***Phasing of UISP Project***

*Annexure A depicts the phasing of the UISP project as well as the order of priority in which the development will take place. The first phase entails the upgrading of Mandela Square. Qualifying beneficiaries currently residing in Mandela Square will be relocated to the 58 units developed on the Garden Site and the remaining families will be temporarily moved to the TRA whilst installation of*

**AGENDA of the  
Portfolio Committee: Community Services  
20 October 2020  
(Also the agenda for the Mayoral Committee Meeting: 28 October 2020)**

---

*infrastructure is in progress on Mandela Square. It is estimated that the families will stay in the TRA between six to nine months. Once upgrading is completed, families will be moved back from the TRA onto serviced sites, leaving the TRA available to accommodate the families from Transit Camp and Asazani, as the upgrading of these two areas forms the second phase of the UISP project.*

*Informal Settlers currently illegally occupying a portion of the Qhayiya Secondary School (approximately 55 families) will also be relocated to the TRA together with the Mandela Square families as the school site has to be vacant by the end of February 2017 to allow the Education Department to begin with the construction of a new school building. These families will have to stay in the TRA until such time that the units on Site C2 (for those qualifying for BNG housing) and the upgrading of Tambo Square Informal Settlement (those who do not qualify for BNG housing), which forms parts of the third phase of the UISP project, have been completed after which they will be relocated onto serviced sites.*

### **Beneficiaries**

A total number of one hundred and sixty eight (168) former residents from Mandela Square (158), Mclintyre Hostel (10) was relocated between February 2017 and May 2017 to the newly developed TRA. The Mclintyre Hostel was located next to Mandela Square and regarded by the affected communities as part of Mandela Square. Prior to the relocation of families, the 2015 survey list was updated by a survey conducted in January 2017, due to the time lapse before the relocation to the TRA could take place.

### **Consultation**

In the absence of the disbanded Social Compact Committee for the particular project, direct consultation is taking place with a committee that represent the residents of the TRA.

### **Discussion**

#### **Potential beneficiaries: Mandela Square**

Potential beneficiaries for the relocation project will be selected from the residents in the TRA who comply with the criteria applicable to UISP and do not qualify for housing in terms of the Integrated Residential Development Programme (**IRDP**) housing subsidy scheme. The TRA development was planned and funded to be converted into an IRDP housing project and therefore residents/applicants with a gross household income exceeding R3500 will not be able to remain in TRA/qualify for housing in terms of IRDP subsidy scheme. Mandela Square was upgraded to consist of 83 serviced sites by September 2020. It is intended to relocate eighty three (83) families from the TRA to Mandela Square, which means one family per serviced site. It is established that three (3)

**AGENDA of the  
Portfolio Committee: Community Services  
20 October 2020  
(Also the agenda for the Mayoral Committee Meeting: 28 October 2020)**

---

of the original beneficiaries relocated to TRA are deceased and another one (1) resides outside Overstrand. Also refer to Annexure D. In the event of a shortage of beneficiaries, consideration will be given to former residents of Tambo Square, currently residing in the TRA.

**Potential beneficiaries: TRA**

The Directorate: Infrastructure and Planning, responsible for housing development intend to abandon the further relocation to the TRA by allowing current residents to apply for IRDP (BNG) subsidies. The mentioned Directorate intend to complete the other UISP projects in Zwelihle by following an *insitu* upgrading approach. This means that 83 residents formerly from Mandela square resident in the TRA, will be considered for the particular IRDP housing opportunities. The administration will in the meantime also commence with the pre-screening of the last mentioned potential beneficiaries. The names of potential beneficiaries for the TRA will be tabled later in a separate report.

The selection of beneficiaries will be done in the rating order based on the earliest date of application (including disabled) from the following potential beneficiaries.

a)	List of former residents of Mandela Square and McIntyre currently residing in the TRA	: 164
b)	Possible replacements: List of potential beneficiaries from Tambo Square currently residing in the TRA	: <u>50</u>
	<b>Total</b>	<b><u>214</u></b>

Refer to Annexures B and C.

**Development parameter for residential zone one: single residential**

The respective serviced sites in Mandela square are approximately 80m<sup>2</sup> in seize. In terms of the Overstrand Municipality: By-law on Municipal Land Use Planning, 2020, the following parameters will apply with regard to the erection of a housing unit on a serviced site, namely:

- Maximum coverage is equal to 80%;
- The street building line is equal to 1,0m;
- The side and rear building line: at least 1,0m on one side and 0m on the other side.

**Building Material**

It is recommended that Council considers assistance with regard to building materials in the form of an emergency housing kit to a maximum of R4,200,00, per unit. Refer to Annexure E. Currently potential beneficiaries are not in possession of building material due to the fact that they reside in incomplete BNG

**AGENDA of the  
Portfolio Committee: Community Services  
20 October 2020  
(Also the agenda for the Mayoral Committee Meeting: 28 October 2020)**

---

housing units in the TRA. The absence of material may also pose a challenge with regards to the timeous relocation to the serviced sites.

### **Rental**

It is recommended that rental agreements be concluded between the Overstrand Municipality and respective potential beneficiaries. The tariff list for 2020/2021 makes provision for normal rental amount of R41.00 (VAT included) per month, which is currently applicable to UISP project at Eluxolweni. A standard rental agreement used in a similar project in Eluxolweni will be considered for the project in Mandela Square.

### **Ownership**

Beneficiaries could be offered an opportunity to acquire ownership through a subsidy scheme in terms of the Finance Linked Individual Subsidy Programme (FLISP) or fund the purchase price from own funding at market value. An assessment of the last mentioned will be done by the administration for future consideration by Council.

## **7. Financial Implications**

### Source of Funding eg. Operating Budget Provisions

Unique Key	: 20170525 078288
Cost Account	: 12900 220210000
Item Description	: Consumed: Materials and Supply
Budget Provision 2019/2020	: R 250 000.00
Spent to Date/Committed	: R 70 215.16
Balance Available	: R 179 784.84

Funding required for this report: R348,000 (including VAT)  
Additional funding to be sourced from possible savings on the Operational budget.

## **8. Staff Implications**

None

## **9. Comments from other Departments, Divisions and Administrations**

**Senior Manager: Engineering Services: Mr D. Hendriks – (028) 313 5059**

*It is hereby confirmed that instructions were issued to the Implementing Agent to prepare an application to Department of Human Settlements for the refurbishment of the 250 TRA units on the Housing Admin Site in Zwelihle.*

**AGENDA of the  
Portfolio Committee: Community Services  
20 October 2020  
(Also the agenda for the Mayoral Committee Meeting: 28 October 2020)**

---

*It was also communicated to the Department of Human Settlements that the project forms part of the 2021/2022 and 2022/2023 budget and has been included as such on the draft 3-year Business Plan forwarded to the Department.*

**10. Annexures**

- Annexure A: Original Relocation Plan of TRA
- Annexure B: List of former residents of Mandela Square and Mclintyre currently residing in the TRA.
- Annexure C: Possible replacements: List of potential beneficiaries from Tambo Square currently residing in the TRA
- Annexure D: List of deceased and relocated former residents of Mandela Square.
- Annexure E: List of building material for emergency housing kit.

**RECOMMENDATION:**

1. that potential beneficiaries for the UISP: 83 serviced sites, Mandela Square be selected from residents of the TRA, Housing Admin site, who comply with the criteria applicable to UISP and also do not qualify for housing in terms of the IRDP housing subsidy scheme, **be approved**,
2. that the list of 164 potential beneficiaries for the UISP: 83 serviced sites Mandela Square, consisting of former residents of Mandela Square and Mclintyre Hostel, currently residing in the Temporary Relocation Area (TRA) **be noted**,
3. that the list of 50 potential beneficiaries consisting of former residents of Tambo Square, currently residing in the Temporary Relocation Area (TRA) **be approved** as possible replacements in the event of a shortfall of potential beneficiaries in recommended number 2 above;
4. that the conclusion of rental agreements with beneficiaries of the UISP: 83 serviced sites, Mandela Square; **be approved**; and
5. that assistance to beneficiaries in the form of building material by way of an emergency housing kit to a maximum value of R4200 (including VAT) per unit, **be approved**.

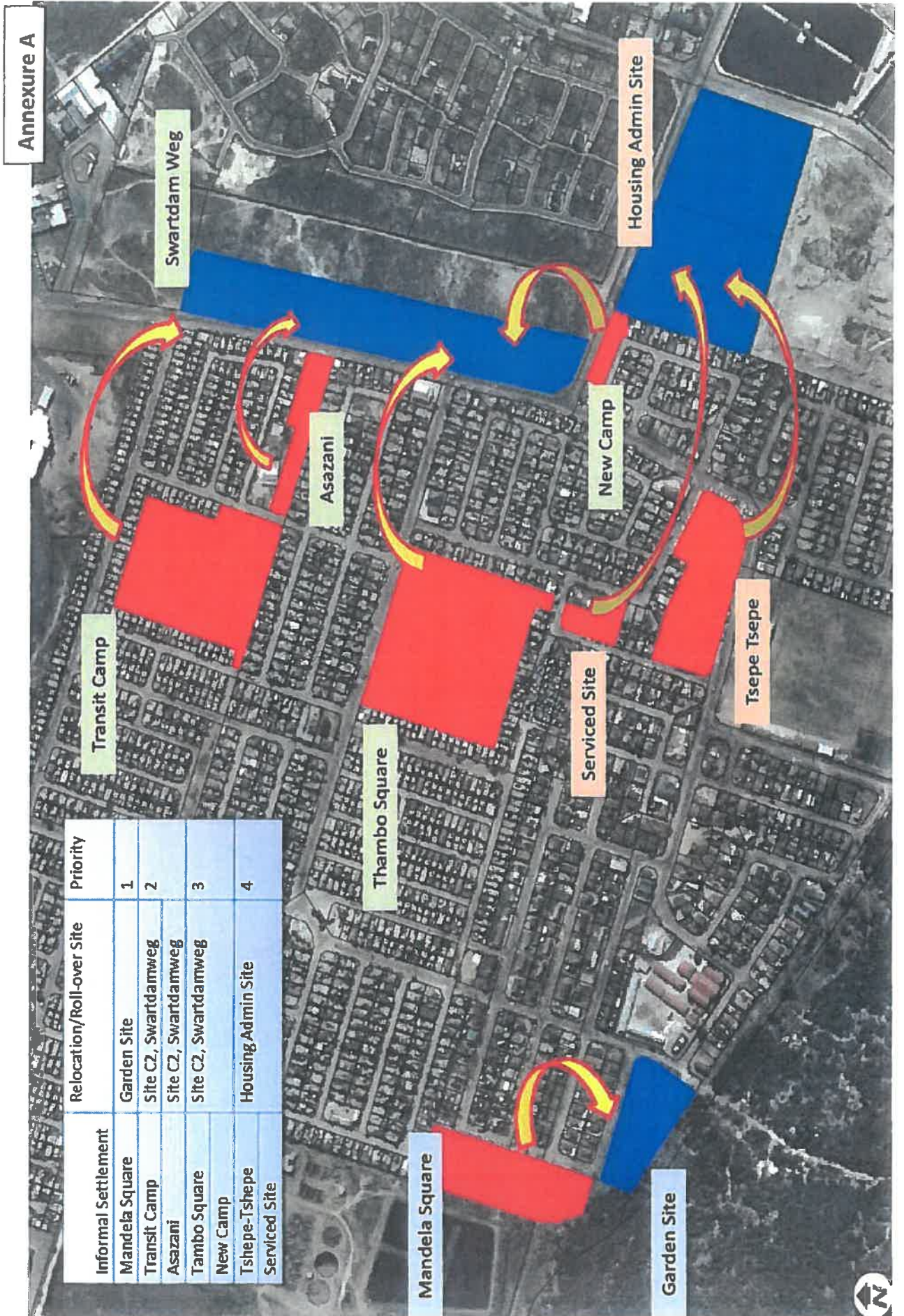
**RESPONSIBLE OFFICIAL :**

**FW FRANS**

**TARGET DATE FOR IMPLEMENTATION :**

**01 NOVEMBER 2020**





Annexure A

Informal Settlement	Relocation/Roll-over Site	Priority
Mandela Square	Garden Site	1
Transit Camp	Site C2, Swartdamweg	2
Asazani	Site C2, Swartdamweg	3
Thambo Square	Site C2, Swartdamweg	3
New Camp	Housing Admin Site	4
Tshepe-Tshepe	Housing Admin Site	4
Serviced Site	Housing Admin Site	4





**OVERSTRAND MUNICIPALITY POTENTIAL BENEFICIARIES**  
**UISP: 83 ERVEN: MANDELA SQUARE, ZWELIHLE**



Annexure B1/3

WCHDD updated: 31 August 2020

No	RegNo	AppDate	AppSurname	AppFirstName	PartSurname	PartFirst Name	Suburb Name
1	600135	1999-04-10	BHOKOLO	PHILLIP			ZWELIHLE
2	600757	2001-02-23	XEGO	ZWELETHU			ZWELIHLE
3	596589	2004/10/01	MQHAKAYI	THANDISWA			ZWELIHLE
4	590776	2004-10-07	BLAYI	VUYISWA	BLAYI	WAKHE	ZWELIHLE
5	590943	2005-02-02	BLAYI	SIBONILE ANTHORN	BLAYI	ZUKISWA	ZWELIHLE
6	591108	2005-02-16	DLEKE	NOLUYANDA ANNA			ZWELIHLE
7	591196	2005-02-22	MAXONGO	BONGINKOSI			ZWELIHLE
8	591236	2005-02-23	NDEDE	LIZO	BOOI	ZANELE	ZWELIHLE
9	591283	2005-02-28	MHANI	SAMCELA			ZWELIHLE
10	591707	2005-07-29	MQAKAZO	LUNGILE NELSON	WOTSETSE	FIKISWA	ZWELIHLE
11	656285	2005/11/29	NOMBONA	SASI BUYISWA			ZWELIHLE
12	592039	2006-01-17	SONAMZI	NCEBA			ZWELIHLE
13	592260	2006-03-15	MAKHEKHE	MANDLA	MLENGA	YANGA OTHEMBELE	ZWELIHLE
14	654330	2006/03/16	SIYOTULA	NONTLAHLA			ZWELIHLE
15	656292	2006/03/24	PAPANE	BUZWELWA	MNTAKATYIWA	MAWETHU	ZWELIHLE
16	592811	2006-03-27	MQINI	TABISA			ZWELIHLE
17	592954	2006-03-29	MADINI	MZUNZIMA	MADINI	ZANELE	ZWELIHLE
18	593161	2006-03-30	ALVERT	THABISA			ZWELIHLE
19	593283	2006-03-31	SIGWAYI	NOMZAMO			ZWELIHLE
20	656307	2006/04/03	PHOSO	MCEBESI	LATSHA	KANYISA	ZWELIHLE
21	593472	2006-04-04	YOTWANA	MZIWANDILE CHRISTOPHER	YOTWANA	THOBEKA	ZWELIHLE
22	593504	2006-04-04	POIYIYA	SABELO	MTSHIZANA	NOKUZOLA LINKY	ZWELIHLE
23	593744	2006-04-05	GXOKHWE	MALIXOLE			ZWELIHLE
24	593659	2006-04-05	LATSHONA	NOSIZWE			ZWELIHLE
25	594097	2006-04-07	MANGAMAMI	TUTUSE			ZWELIHLE
26	595691	2007-10-04	BEJA	ELLIOT SOYISO	BEJA	VUYOKAZI	ZWELIHLE
27	595799	2007-10-05	MAFAESA	MPHALELENG BERNARD	JACK	THEMBEKA	ZWELIHLE
28	595899	2007-10-05	MKHAPHI	MASITOLE			ZWELIHLE
29	597184	2010-08-23	FIKIZOLO	SANDISWA			ZWELIHLE
30	597282	2010-08-26	MATWA	PHUMLA			ZWELIHLE
31	597453	2010-09-01	MAKELENI	SITHEMBILE	MAKELENI	NTOMBOMZI	ZWELIHLE
32	597538	2010-09-03	NKONZO	SIYABULELA	NTLOKO	PATISWA	ZWELIHLE
33	597641	2010-09-07	MDLANGAZI	NTOMBIZINE	MENGANE	BULELANI	ZWELIHLE
34	597734	2010-09-09	DONDOLO	MALIBONGWE			ZWELIHLE
35	597969	2010-09-14	ZIWELE	ZIMISELE	KWEYA	LANDISWA	ZWELIHLE
36	597953	2010-09-14	XASHIMBA	MONICA			ZWELIHLE
37	598202	2010-09-17	KANAYO	FUNDIXOLO PATRICK NAUGHTYBOY	MALUMA	NOLOYISO	ZWELIHLE
38	598218	2010-09-17	MKHOLISO	ATHENKOSI			ZWELIHLE
39	656198	2010/09/18	DWETYA	KHONIE	XAKALEGUSHA	MTSHUTHSISI	ZWELIHLE
40	598282	2010-09-20	GOBA	MZIWABANTU	GOBA	VUYISWA	ZWELIHLE
41	598379	2010-09-20	FELE	NOMZAMO			ZWELIHLE
42	598389	2010-09-20	ZINTINI	NTOMBIZODWA			ZWELIHLE
43	598360	2010-09-20	MACINGWANE	NEZIWE			ZWELIHLE
44	598361	2010-09-20	MAKABENI	AMANDA			ZWELIHLE
45	656278	2010-09-21	NQOLWANA	MONICA			ZWELIHLE
46	656303	2010/09/21	TIMLA	SIXOLILE			ZWELIHLE
47	598661	2010-09-22	NTAMEHLO	BONGANI	SOGA	TUMEKA	ZWELIHLE
48	598717	2010-09-22	MAGAVU	IRENE			ZWELIHLE
49	598928	2010-11-02	POIYIYA	MFUSI	MADOLWANA	NOLUSINDISO	ZWELIHLE
50	44493	2014-04-10	GELA	BUSISIWE			ZWELIHLE
51	656229	2014/09/08	GOLA	THEMBINKOSI			ZWELIHLE
52	650096	2014/11/09	MAQUTSHANA	SIMBONGILE	GWADA	N	ZWELIHLE
53	650082	2014/11/09	DYOSIBA	STARNFORNT	DYOSIBA	NOSIPHO	ZWELIHLE
54	627890	2014-11-10	SOPHINI	NJONGO THANDISIWE	MTINI	NOSIPHO	ZWELIHLE

**OVERSTRAND MUNICIPALITY POTENTIAL BENEFICIARIES**  
**UISP: 83 ERVEN: MANDELA SQUARE, ZWELIHLE**



Annexure B2/3

WCHDD updated: 31 August 2020

No	RegNo	AppDate	AppSurname	AppFirstName	PartSurname	PartFirst Name	Suburb Name
55	627273	2014-11-25	NTOZAKHE	SITHANDILE			ZWELIHLE
56	627278	2014-12-02	MAPINI	PHATHISWA			ZWELIHLE
57	629189	2015-01-07	MCOYANA	NOLUSINDISO			ZWELIHLE
58	629205	2015-01-13	MSINGALI	ANTONY	MSINGALI	LIZEKA WITNESS	ZWELIHLE
59	633736	2015-04-16	MCASA	ZIMISELE			ZWELIHLE
60	633737	2015-04-16	BADLI	ZIMELE			ZWELIHLE
61	633828	2015-04-20	YEKO	YANDISA ISAAC			ZWELIHLE
62	634174	2015-04-24	DELA	NKOSINATHI			ZWELIHLE
63	634438	2015-05-04	SINDEKILE	VUMILE			ZWELIHLE
64	634450	2015-05-04	MZANYWA	SIPHELELE	GAWULA	BUYISWA	ZWELIHLE
65	634434	2015-05-04	NKWENKWE	MELIKHAYA			ZWELIHLE
66	634543	2015-05-05	GQOBOKA	SBONGILE	NGALO	NOXOLO	ZWELIHLE
67	634464	2015-05-05	FINCA	SINTHEMBA	JININDA	NOBAHLE	ZWELIHLE
68	634536	2015-05-05	NOZINXEZU	SIMPHIWO	BOCO	NOCAWE	ZWELIHLE
69	634545	2015-05-05	FELE	NKOSINATHI			ZWELIHLE
70	634467	2015-05-05	MDUNYELWA	ASANDA	NOBHALA	THEMBELANI	ZWELIHLE
71	634542	2015-05-05	SIZATHU	SIZWE	ZWEM	NOKHEFU	ZWELIHLE
72	634619	2015-05-06	MBULAWA	DUMISANI			ZWELIHLE
73	634622	2015-05-06	MLENGA	LINDA			ZWELIHLE
74	634573	2015-05-06	MSINGALI	THEMBA	MLENGA	ZIMBINI	ZWELIHLE
75	634615	2015-05-06	GQADUSHE	BULELANI	KLEINBOOI	KHAYAKAZI	ZWELIHLE
76	634623	2015-05-06	NONYONDLA	LUZUKO			ZWELIHLE
77	636692	2015-06-24	MAY	SICELO	MATHISO	PHELISA	ZWELIHLE
78	656274	2015/07/02	GQAMANE	ENERST	MAQUME	FANISWA	ZWELIHLE
79	656197	2015/07/02	MCHOLO	PETROS			ZWELIHLE
80	656231	2015/07/02	GAYI	FUNISWA			ZWELIHLE
81	656222	2015/07/02	MADEKANE	STHEMBISO			ZWELIHLE
82	636966	2015-07-02	DEMESHA	PATRIC LUNGILE			ZWELIHLE
83	656228	2015/07/02	MBANDEZELO	BONGISWA			ZWELIHLE
84	637124	2015/07/02	MXABANGELI	BONGIWE			ZWELIHLE
85	656220	2015/07/02	TEWU	THEMBISA			ZWELIHLE
86	656225	2015/07/02	TEWU	SINAZO			ZWELIHLE
87	656227	2015/07/02	MAXHAKAMBA	MZWANDILE	VAROYI	NOMCELO	ZWELIHLE
88	636973	2015-07-03	WAGRAYA	BONISWA			ZWELIHLE
89	637452	2015/07/07	TONGILE	NODODA	NGENO	PUMZA	ZWELIHLE
90	637453	2015/07/07	NGXINGWA	SITHANDILE	NGEJANE	NOMKHITHA	ZWELIHLE
91	656301	2015/07/07	SITOLOKO	NKOLISEKO	SILOLO	NOZUKO	ZWELIHLE
92	656297	2015/07/07	MATSILI	PHUMLANI	MBANGATHA	NOZISA	ZWELIHLE
93	656293	2015/07/07	WOTSETSE	LWAZI			ZWELIHLE
94	656298	2015/07/07	MBOLI	LUYO	BOY	NOLUVO	ZWELIHLE
95	656299	2015/07/07	SONDO	LINDILE			ZWELIHLE
96	656305	2015/07/07	XHOMIYEZA	AKHONA	TSHAKA	SIYAVUYA	ZWELIHLE
97	637654	2015/07/07	NGENO	MZULINGILE			ZWELIHLE
98	637230	2015-07-15	NTSHONTSHO	VELILE			ZWELIHLE
99	637472	2015-07-22	ZONO	ANDILE	ZONO	BONGIWE	ZWELIHLE
100	637625	2015-07-24	BUBU	SIBONGISENI			ZWELIHLE
101	637670	2015-07-27	MPONDO	SAWELISIWE			ZWELIHLE
102	637852	2015-07-30	LITE	SANDILE			ZWELIHLE
103	637864	2015-07-30	THSUNGWINI	MBONISENI			ZWELIHLE
104	637908	2015-07-31	SOTOMELA	BONGINKOSI	SIMANGA	THULISWA	ZWELIHLE
105	637906	2015-07-31	GAWULA	KULULWA			ZWELIHLE
106	638684	2015-08-25	MADIKANE	THOZAMA ALINAH			ZWELIHLE
107	638765	2015-08-27	BHULA	STANLEY SIMPHIWE	FUBA	MARGARET ANN	ZWELIHLE
108	639219	2015-09-07	TSHAYIMPUNZI	NONINA ABONGILE			ZWELIHLE
109	653017	2016/07/06	MZIMELI	SAMKELO			ZWELIHLE
110	654336	2016/07/21	JOJA	BANTU EDWARD	JOVANE	NOSIPHIWO	ZWELIHLE
111	655583	2016/08/25	MVULANKULU	MZOLOLO			ZWELIHLE
112	691714	2017/01/03	MJATYA	YANEZWA			ZWELIHLE
113	704615	2017/01/11	MAGASANA	WANDILE	MAGASANA	ASANDISWE	ZWELIHLE
114	707130	2017/01/12	HLOHLO	MALIVIWE			ZWELIHLE

**OVERSTRAND MUNICIPALITY POTENTIAL BENEFICIARIES**  
**UISP: 83 ERVEN: MANDELA SQUARE, ZWELIHLE**



Annexure B3/3

WCHDD updated: 31 August 2020

No	RegNo	AppDate	AppSurname	AppFirstName	Part Surname	Part First Name	Suburb Name
115	707105	2017/01/12	MFATSHA	SANDISO			ZWELIHLE
116	707129	2017/01/12	VAKELE	OLWETHU			ZWELIHLE
117	707133	2017/01/12	NDUKWINI	NTUTHUZELO			ZWELIHLE
118	707106	2017/01/12	RASMENI	SIMPHIWE			ZWELIHLE
119	707104	2017/01/12	LUBABALO	GOLA			ZWELIHLE
120	692406	2017/01/15	JININDA	ASANDA			ZWELIHLE
121	692409	2017/01/15	MATILA	SIPHAMANDLA			ZWELIHLE
122	709392	1/17/2017	KLEINBOOI	NYANISWA			ZWELIHLE
123	691068	1/17/2017	NOBUNUNU	BONISWA			ZWELIHLE
124	707123	2017/01/17	NTANTISO	MANDISA			ZWELIHLE
125	712281	1/17/2017	LUKHANZI	MAKABONGWE			ZWELIHLE
126	707128	2017/01/19	SOKO	VELISWA SYNTHIA			ZWELIHLE
127	707156	2017/01/19	KOLOTLA	MZIMASI			ZWELIHLE
128	707138	2017/01/24	MANGALISO	MONWABISI			ZWELIHLE
129	707126	2017/02/02	SIDULI	SIZWE JASON			ZWELIHLE
130	707135	2017/02/02	KEBE	KGOTSOFALANG			ZWELIHLE
131	662911	2017/03/23	MPESO	THANDO			ZWELIHLE
132	663053	2017/03/24	MXHITYWA	SIPHO	MAKHWENKWANA	BUZIWE	ZWELIHLE
133	707134	2017/04/20	NTLUZWANA	SIPHUMLE			ZWELIHLE
134	704563	2017/05/17	JEBEJEBE	VELILE			ZWELIHLE
135	698576	2017/06/06	BOLOFO	LAURENCE PITSO			ZWELIHLE
136	703635	2017/10/01	JONGA	KHAYALETHU			ZWELIHLE
137	703662	2017/10/04	MPONDOMTHATHI	MAZIPHATHE			ZWELIHLE
138	703832	2017/10/04	SOMANTATSHE	SONWABILE			ZWELIHLE
139	703824	2017/10/04	ZAMIKHULU	LONWABO			ZWELIHLE
140	703814	2017/10/04	MATSILI	MANDLA	XHELO	NOMTHANAZO	ZWELIHLE
141	703830	2017/10/04	LOLWANA	BABALWA			ZWELIHLE
142	703813	2017/10/04	MTHSITHSI	SIPHOSETHU			ZWELIHLE
143	703833	2017/10/04	KHEHLE	NIKIWE			ZWELIHLE
144	703831	2017/10/04	BAMBISO	TSIDISO	MKOHLI	NOMTHANAZO	ZWELIHLE
145	703815	2017/10/04	DAMESI	THANDO			ZWELIHLE
146	703922	2017/10/08	KUSELO	LINDANI			ZWELIHLE
147	703938	2017/10/08	MLANDELA	INATHI			ZWELIHLE
148	703927	2017/10/08	BELWANA	LUBABALO			ZWELIHLE
149	703259	2017/10/11	BUNZI	MNIKENI VOBAN	GWANGWA	NGWANGWA	ZWELIHLE
150	703308	2017/10/11	LITE	PHELOKAZI			ZWELIHLE
151	704566	2017/10/21	FELE	BONISWA	RORWANA	SIVIWE	ZWELIHLE
152	704572	2017/10/21	MALIWA	PHAPHAMA			ZWELIHLE
153	704610	2017/10/22	TETYANA	BONANI	NOGABA	VATHISWA	ZWELIHLE
154	704608	2017/10/22	DIBELA	LELETHU			ZWELIHLE
155	694203	2017/11/05	NKOMPHELO	PHUMLANI SYDNEY			ZWELIHLE
156	705702	2017/11/11	NGXINGWA	AMANDA			ZWELIHLE
157	693792	2017/11/17	DIMAYI	LANDILE			ZWELIHLE
158	693948	2017/11/20	MBOLI	PUMZILE	TSETSE	FIKISWA	ZWELIHLE
159	694092	2017/11/20	TONGILE	SIYABULELA			ZWELIHLE
160	691566	2017/11/27	MAKEKE	MAKHOSANDILE	TEMBANI	PHATISWA	ZWELIHLE
161	690880	2017/11/30	NDABENI	THEMBELANI			ZWELIHLE
162	692240	2017/11/30	TSHANANDA	OLWETU			ZWELIHLE
163	691705	2017/12/13	JININDA	NOMFANISO			ZWELIHLE
164	692050	2017/12/20	NDWANYAZA	LOASE KNOWLEDGE			ZWELIHLE

**OVERSTRAND MUNICIPALITY POTENTIAL BENEFICIARIES**

Annexure C

**UISP: 83 ERVEN: MANDELA SQUARE, ZWELIHLE**

Replacements: List of potential beneficiaries from Tambo Square currently residing in the TRA

WCHDD updated: 31 August 2020

	RegNo	AppDate	AppSurname	AppFirstName	PartSurname	PartFirst Name	Suburb Name
1	600921	2001-04-11	NGQOYIYANA	SIMPHIWE	NGQOYIYANA	NTOMBEKHAYA	ZWELIHLE
2	590940	2005-02-02	LALISILE	MSEKELI			ZWELIHLE
3	591030	2005-02-10	KULA	KOLEKA			ZWELIHLE
4	591948	2005-11-29	MPUKWANA	BANGISILE	NXOLO	VICTORIA	ZWELIHLE
5	592033	2006-01-17	NHONHWANA	XOLISA	BHAKO	PHINDISWA	ZWELIHLE
6	592525	2006-03-23	GEBUZA	NOMNQOPISO MONICA			ZWELIHLE
7	594923	2007-09-12	NODIPHU	NONYAMEKO	MHLUZI	VUYO	ZWELIHLE
8	595531	2007-10-02	NOMPONDO	NOKUZOLA			ZWELIHLE
9	597270	2010-08-26	NXOKOYI	VUYANI	MAXWELE	NOMLINDELO	ZWELIHLE
10	597879	2010-09-13	MBUQWA	NOSIPHO			ZWELIHLE
11	598214	2010-09-17	MQAKATHA	NANGAMSO			ZWELIHLE
12	598397	2010-09-20	NOMPHO	SEBENZILE			ZWELIHLE
13	598460	2010-09-21	NOBANDLA	MFUNEKO			ZWELIHLE
14	598558	2010-09-21	LEMBESE	KAYALETU			ZWELIHLE
15	598792	2010-09-23	SIKOTI	MZIYANDA			ZWELIHLE
16	598808	2010-09-27	NYEMBEZI	LULAMILÉ PATRICK			ZWELIHLE
17	650077	2015/04/12	MBANDE	NTOMBENCINCI			ZWELIHLE
18	650080	2015/04/12	NTENGO	THEMBELANI			ZWELIHLE
19	707151	2017/01/16	MAKATESI	SIMPHIWE			ZWELIHLE
20	707157	2017/01/16	GXWALIYEKO	MKHUSELI	SINYENYEKO	YANDISWA	ZWELIHLE
21	707159	2017/01/16	MSHIYWA	NOZIBELE			ZWELIHLE
22	707161	2017/01/16	THALAZA	BUHLE	MFUDUKO	PHINDEKA	ZWELIHLE
23	707164	2017/01/16	KOLOTLA	MSINDISI	SITINGWANE	NOMFEZEKO	ZWELIHLE
24	707169	2017/01/16	MABOTE	THABO			ZWELIHLE
25	707171	2017/01/16	QUMBA	THEMBALETHU			ZWELIHLE
26	707175	2017/01/16	ZWELILUNGILE	ABONGILE			ZWELIHLE
27	707176	2017/01/16	MATHUNYWA	MASIYE			ZWELIHLE
28	707177	2017/01/16	DASE	SOYISO			ZWELIHLE
29	707178	2017/01/16	SIKHEFU	MBUYISELI	CETYANA	NOLOYISO	ZWELIHLE
30	707180	2017/01/16	THOTYELWA	MAGALELA			ZWELIHLE
31	707182	2017/01/16	MAGWELE	THULANI	NYAWO	LUNGELWA	ZWELIHLE
32	707183	2017/01/16	NONDAZI	THEMBISA			ZWELIHLE
33	707158	2017/01/17	SOPHINI	THEMBILE	LUZONDO	FUNANYWA	ZWELIHLE
34	707166	2017/01/17	RHEME	MBONENI	RHEME	ZUSAKHE	ZWELIHLE
35	707167	2017/01/17	XHOTYANA	LOYISO			ZWELIHLE
36	707173	2017/01/17	MANQEZA	LWANDILE			ZWELIHLE
37	707181	2017/01/17	CELU	KHAYALETHU			ZWELIHLE
38	692727	2017/01/17	MKWA	SENOKSI			ZWELIHLE
39	691414	2017/01/17	GASHI	NOLUSINDISO			ZWELIHLE
40	694093	2017/01/17	SITIMELA	SIYABONGA			ZWELIHLE
41	692763	2017/01/17	FIKA	MSIKELELI			ZWELIHLE
42	692943	2017/01/17	MAPUMA	ZUKILE			ZWELIHLE
43	692685	2017/01/17	MNYUKWENI	MFUNDO	MNYUKWENI	MWABISA	ZWELIHLE
44	707179	2017/01/17	GEBUZA	UNATHI			ZWELIHLE
45	707152	2017/01/19	THATHUNYAWO	BONKE			ZWELIHLE
46	707170	2017/01/30	FUKULA	THEMBILE			ZWELIHLE
47	707154	2017/01/31	ZONO	WANDISILE ELVIS	MARU	SIBONGILE	ZWELIHLE
48	707162	2017/01/31	RABI	NOLUVO			ZWELIHLE
49	707172	2017/01/31	NGONDZE	ANDISWA PRECIOUS			ZWELIHLE
50	707155	2017/05/03	TUMA	YONELA	DALINDYEBO	NQABAKAZI	ZWELIHLE

**OVERSTRAND MUNICIPALITY POTENTIAL BENEFICIARIES**  
**UISP: 83 ERVEN: MANDELA SQUARE, ZWELIHLE**



WCHDD updated: 31 August 2020

<b>Deceased: Applications cancelled by WCHD</b>							
No	RegNo	AppDate	AppSurnam	AppFirstName	PartSurnar	PartFirstNar	SuburbName
1	634544	2015-05-05	FELE	FEZEKILE		AM 68 MAND	ZWELIHLE
2	595834	2007-10-05	DANA	LUDWE	NOLELE	9170 KWASA	ZWELIHLE
3	633348	4/8/2015	WILLIE	ZAKHELE		AM 82 MANDELA	

<b>Found at Theewaterskloof municipality WCHDD</b>							
No	RegNo	AppDate	AppSurnam	AppFirstName	PartSurnar	PartFirstNar	SuburbName
1	628113	1/8/2015	KEBENGU	SABELO			

## ANNEXURE E

**COSTING PER STRUCTURE: EMERGENCY ASSISTANCE (EHP)**

06/10/2020

#	MATERIALS	UNIT	QTY	PRICE	TOTAL (INCL VAT)
1	0,30mm corr metal roof sheets 3,00m	ea	17	125,00	2 125,00
2	0,30mm corr metal roof sheets 4,20m	ea	5	175,00	875,00
3	250micr Gunplas plastic 4x3m	ea	1	100,00	100,00
4	Wire nails 75mm	KG	1	27,00	27,00
5	100/80 Split poles 3,00m	ea	10	99,23	992,30
	<b>TOTAL</b>				<b>4 119,30</b>